

Anglia Ruskin University Information for outgoing undergraduates Bachelor IB



Dezember 2023

Prof. Dr. Sandra Gronover



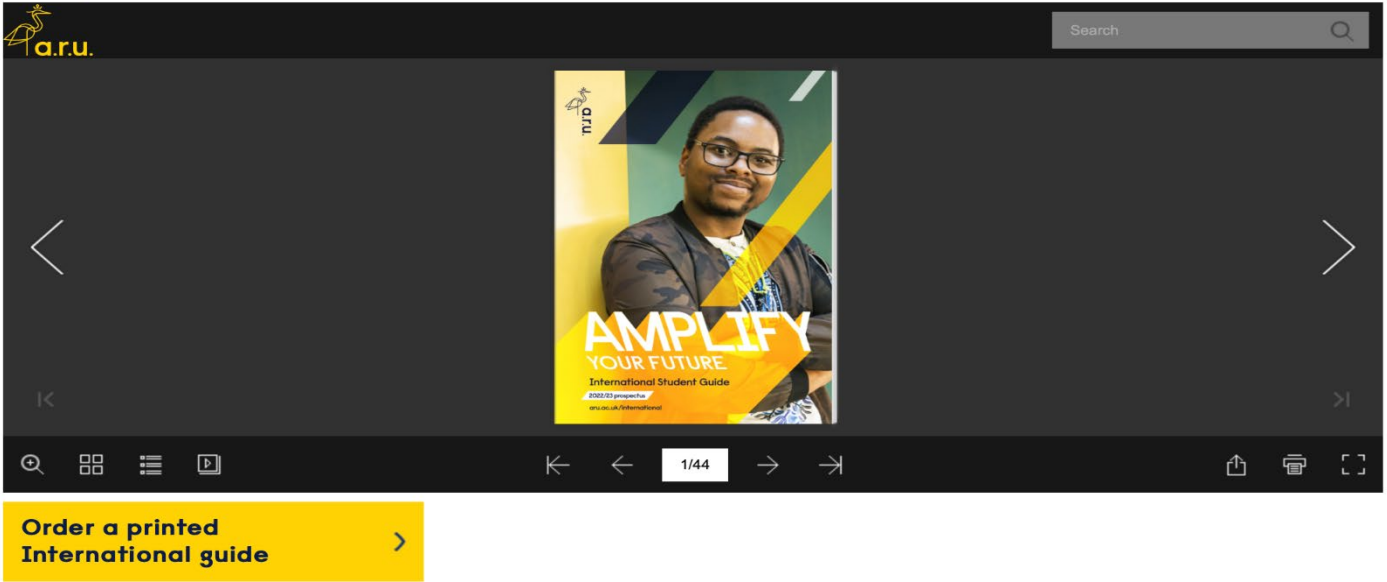
Anglia Ruskin University Cambridge Campus



If interested – pls contact me as soon as possible to clarify details!

Information material

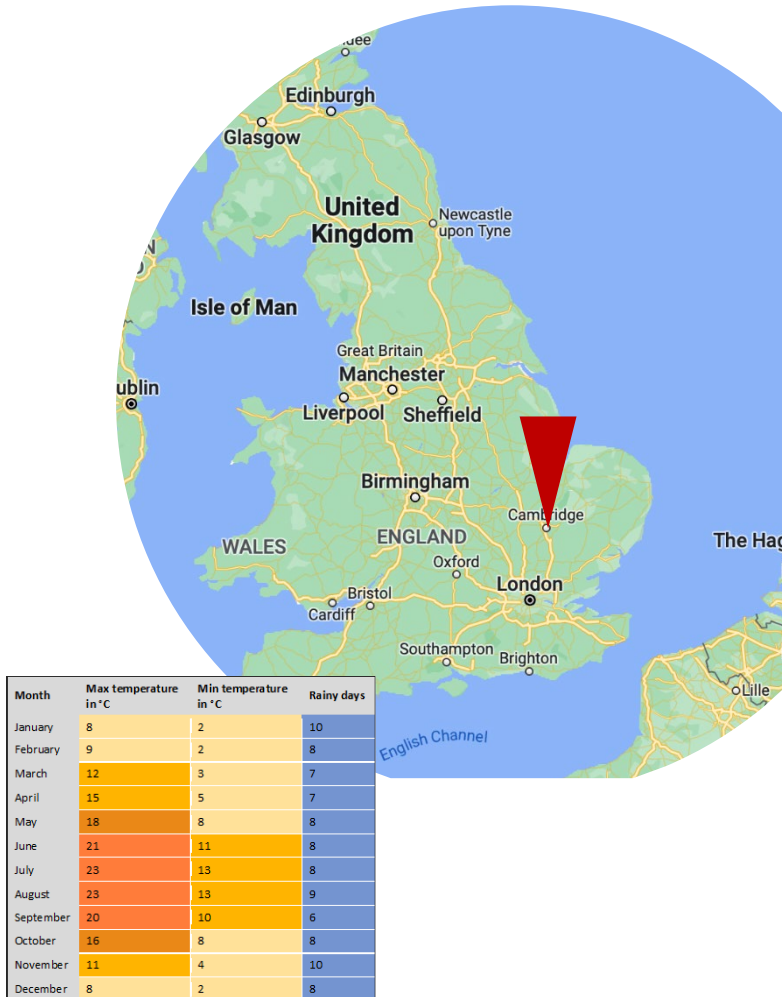
International guide
2022/23



Order a printed
International guide >

International guide with helpful information on the bottom of the website:
<https://aru.ac.uk/our-prospectuses>

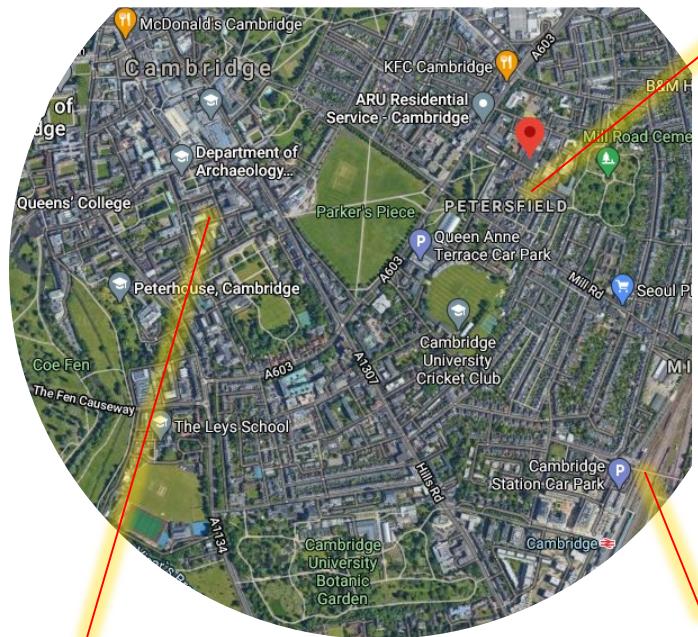
Cambridge



- Is located on the **River Cam** and is the country town in **Cambridgeshire**
- The city is approx. 89 km in the North of London
- Is home to two universities and over **30,000 students**. Cambridge is known for the world-famous University of Cambridge.
- **English** is the official language
- Official population is approx. 145,700 inhabitants of Cambridge

Anglia Ruskin University Location

Cambridge (45 minutes to London)



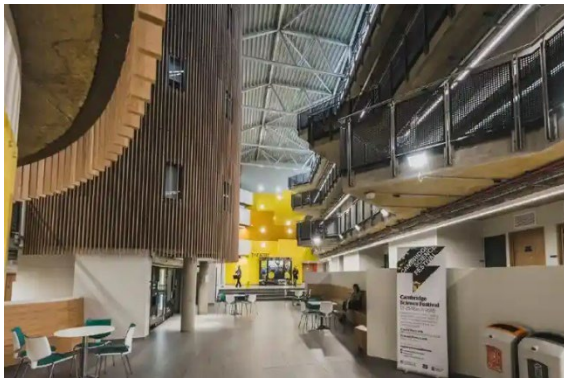
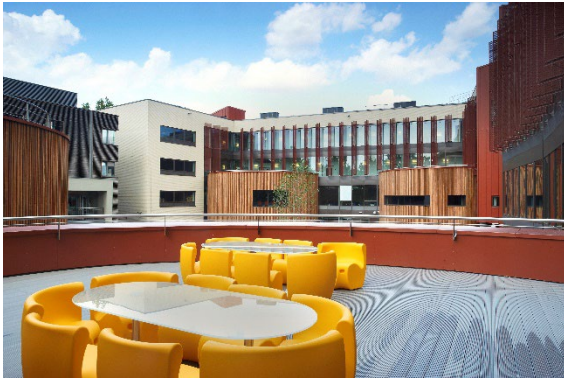
ARU

Downtown
(Shopping, Restaurants, Bars)

Main Train Station



Impressions of Cambridge



How you can get to Cambridge?



- Flights from Munich to London Heathrow (85 km), Stansted (36km), or Luton (52 km) – train, bus, and taxi needed to get to Cambridge; easy onward traveling from all airports
- Flight time is approx. 2 hours
- Alternatives: train, car, ferry

Accommodation in Cambridge

- Four properties owned by the university and further options owned by third-parties
- Rent starts from £150 per week
- All accommodations are self-catered
- Situated on campus or in walking distance to Cambridge Campus
- Private accommodation as an alternative
- <https://aru.ac.uk/student-life/accommodation/accommodation-in-cambridge>



Advanced entry into the 3rd year
(requirements still under discussion)

- MOD007242 International Business (30 credits)
- MOD007243 EU Economy (15 credits)
- Ruskin Module (15 credits)
- MOD007196 The Entrepreneurial Journey (30 credits)
- MOD007198 Project Management and Implementation (30 credits)

Courses are still under review!
Changes for Landshut grouping
„financial mgmt“ very likely

- **2 semesters** per academic year
 - **September – December**
(examination period: January)
 - **January – May**
(examination period: May)

**ARU accepts students starting
January !!**



	Duration < 6 months		Duration > 6 months	
	EU student	Non-EU student	EU student	Non-EU student
VISA	Standard visitor visa	Standard visitor visa	Student visa	Student visa
Language test	<ul style="list-style-type: none"> - IELTS of 6.0 - TOEFL iBT with 80 - Pearson PTE with 60 - Further accepted tests by A.R.U. please click here 	<ul style="list-style-type: none"> - IELTS of 6.0 - TOEFL iBT with 80 - Pearson PTE with 60 - Further accepted tests by A.R.U. please click here 	<ul style="list-style-type: none"> - IELTS of 6.0 - TOEFL iBT with 80 - Pearson PTE with 60 - Further accepted tests by A.R.U. please click here 	<ul style="list-style-type: none"> - IELTS of 6.0 - TOEFL iBT with 80 - Pearson PTE with 60 - Further accepted tests by A.R.U. please click here
Health care	EU health care enough	International health insurance required	Immigration health surcharge	Immigration health surcharge
Work	None	None	< 20 hours/week	< 20 hours/week

For further information please visit: <https://aru.ac.uk/international>

Tuition fee

New Tuition Fees still not available!



- EU students beginning their studies after 1 August 2021 will be considered as overseas students for fee purposes
- Tuition fees 2023-24: 15000 GBP
- International Partner Discount: 2000 GBP
- **Fee 13.000 GBP = ca.15.200 Euro**

Information without guarantee!



Prof. Dr. Sandra Gronover
Hochschule Landshut
Am Lurzenhof 1
84036 Landshut

Tel. +49 (0)871 – 506 411
Fax +49 (0)871 – 506 506
info@haw-landshut.de
www.haw-landshut.de