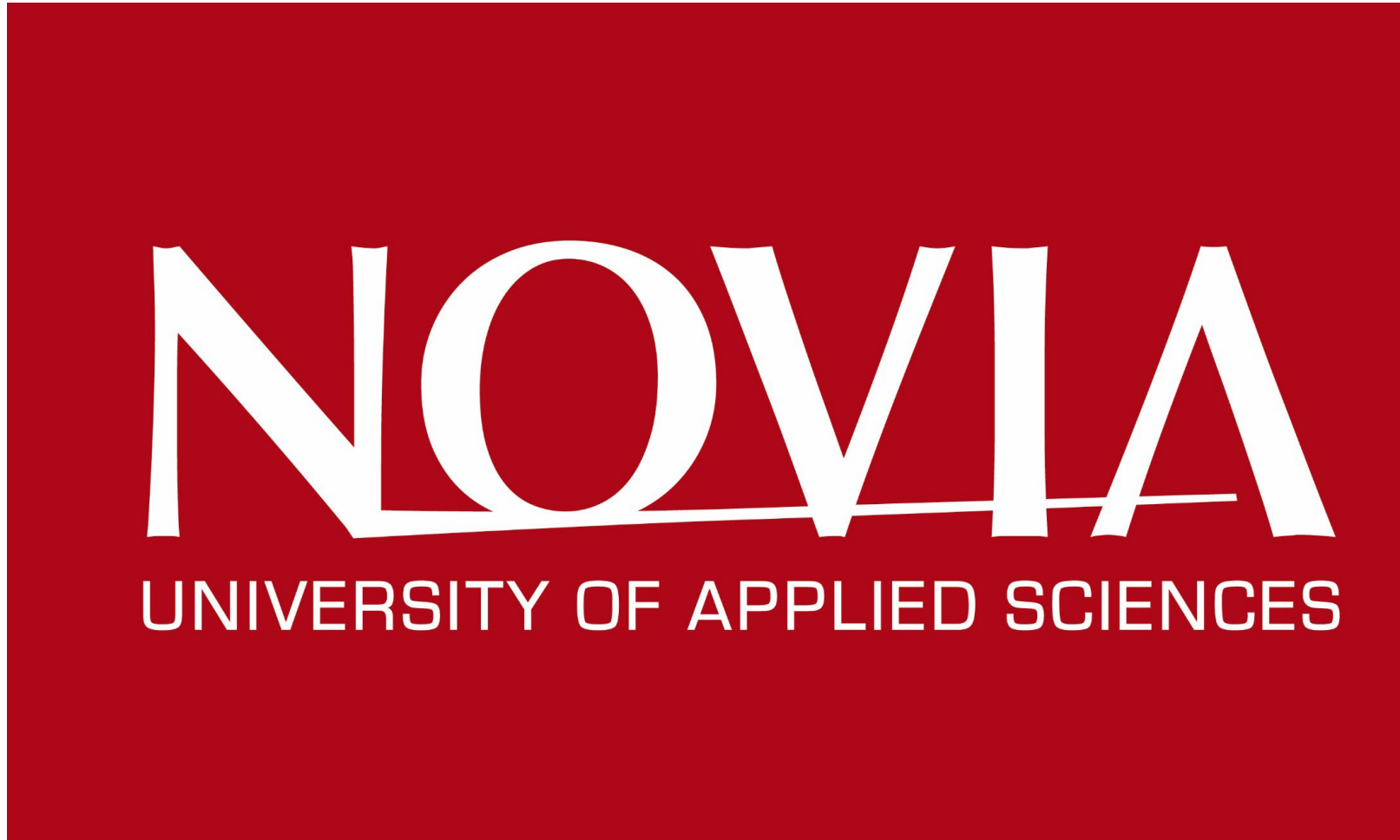
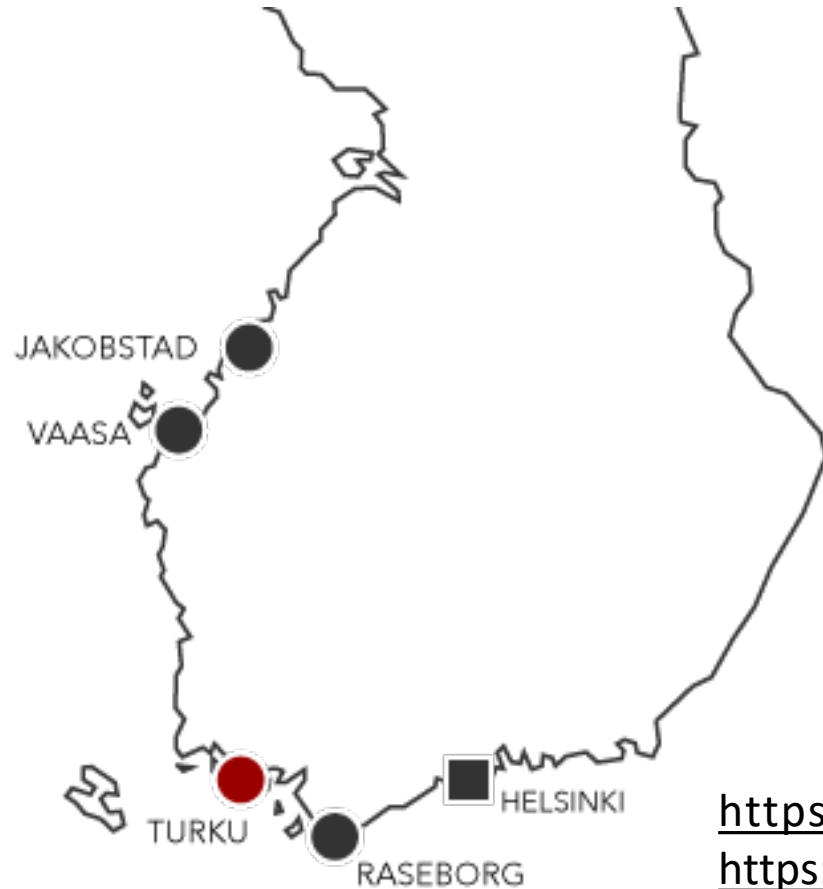




**NOVIA UNIVERSITY OF APPLIED SCIENCES  
TURKU / FINLAND**



# NOVIA UNIVERSITY OF APPLIED SCIENCES INTRODUCTION



NOVIA IS LOCATED ALONG THE SWEDISH-SPEAKING COAST

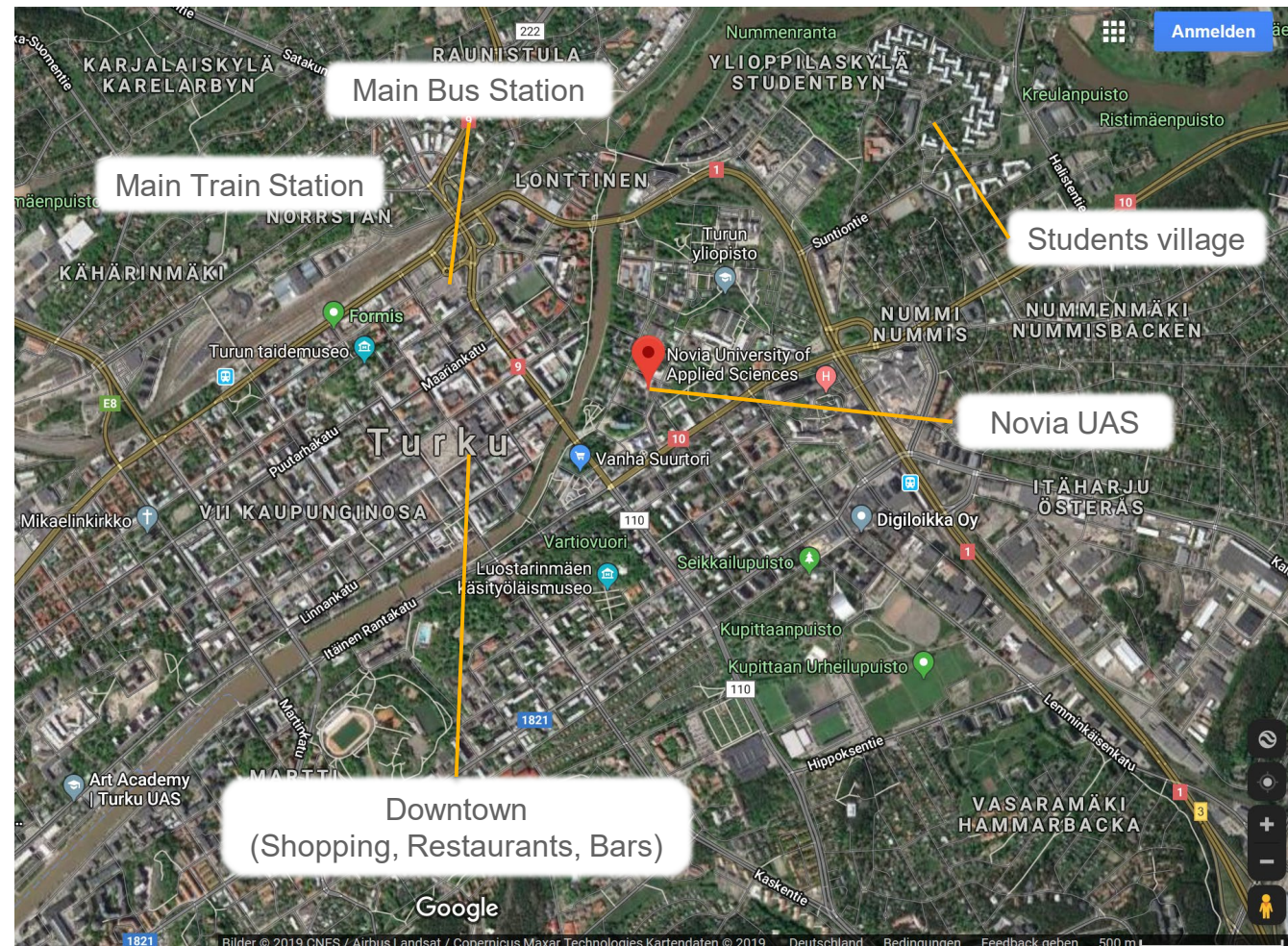
- CAMPUS JAKOBSTAD
- CAMPUS VASA, WOLFFSKAVÄGEN
- CAMPUS RASEBORG
- CAMPUS ÅBO (TURKU)

<https://youtu.be/UA-pd-iV7MM>  
<https://youtu.be/cquGkkf2Lcc>



# TITLE OF THE SLIDE CAN ALSO BE LONGER

- SIXTH-LARGEST CITY (POPULATION ABOUT 201.000; WITH ABOUT 40.000 HIGHER EDUCATION STUDENTS)
- FOUR UNIVERSITIES
- THIRD-LARGEST ECONOMY
- OFFICIAL LANGUAGE IS FINNISH AND SWEDISH
- TURKU IS LOCATED NEAR THE MOUTH OF AURA RIVER
- OLDEST CITY OF FINLAND (FOUNDED IN 13<sup>TH</sup> CENTURY)
- GOVERNMENT MOVED AFTER 1812 TO HELSINKI
- FIRST SCHOOL (13<sup>TH</sup> CENTURY) AND FIRST UNIVERSITY (1640) OF FINLAND WAS ESTABLISHED IN TURKU
- IN 1827 A BIG FIRE DESTROYED MOST OF THE CITY



# NOVIA UNIVERSITY OF APPLIED SCIENCES TRAVEL AND LIVING

## HOW TO GET THERE?

- BY AIR: MUNICH-HELSINKI  
CONTINUE BY BUS OR TRAIN: HELSINKI-TURKU
- BY AIR: MUNICH-RIGA-TURKU

COST: ABOUT 200-360€

DURATION: ABOUT 5H (DOOR-TO-DOOR)

## WHERE TO STAY?

- STUDENTS VILLAGE OR VARISSUO ([WWW.TYS.FI](http://WWW.TYS.FI)),
- PRIVATE ACCOMMODATION/FLAT SHARING

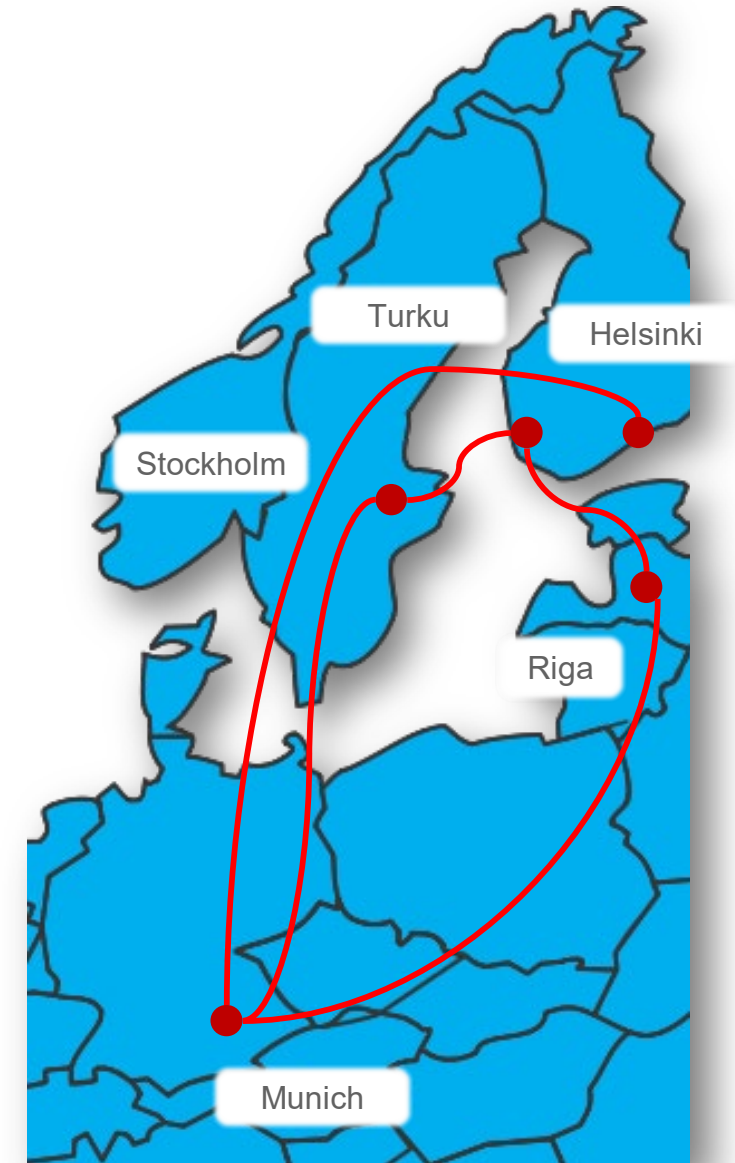
COST: STARTING 305€/MONTH UP TO 600€/MONTH (PRIVATE FLATS CAN OFTEN SHARED BY TWO)

**ATTENTION:** SOME APARTMENTS WITHOUT FURNITURE; FOR EXCHANGE STUDENTS MOST LIKELY TO GET AN APARTMENT IN VARISSUO (5KM FROM CITY CENTRE).

## HOW MUCH IS THE COST LIVING?

BIG-MAC-INDEX: \$4.77 (SAME LEVEL TO GERMANY)

OECD PRICE LEVEL INDEX 2023: 107 FINLAND (96 GERMANY)





# NOVIA UNIVERSITY OF APPLIED SCIENCES CLIMATE IN TURKU

Climate data for Turku													[hide]
Month	Jan	Feb	Mar	Apr	May	Jun	Jul	Aug	Sep	Oct	Nov	Dec	Year
Record high °C (°F)	8.5 (47.3)	10.2 (50.4)	15.8 (60.4)	24.5 (76.1)	30.0 (86.0)	32.0 (89.6)	35.9 (96.6)	32.6 (90.7)	27.8 (82.0)	18.9 (66.0)	11.6 (52.9)	10.6 (51.1)	35.9 (96.6)
Average high °C (°F)	-1.7 (28.9)	-2.1 (28.2)	2.0 (35.6)	8.8 (47.8)	15.5 (59.9)	19.5 (67.1)	22.3 (72.1)	20.5 (68.9)	14.9 (58.8)	8.8 (47.8)	3.0 (37.4)	-0.1 (31.8)	9.3 (48.7)
Daily mean °C (°F)	-4.4 (24.1)	-5.2 (22.6)	-1.6 (29.1)	4.0 (39.2)	10.2 (50.4)	14.4 (57.9)	17.5 (63.5)	16.0 (60.8)	11.0 (51.8)	5.9 (42.6)	0.8 (33.4)	-2.6 (27.3)	5.5 (41.9)
Average low °C (°F)	-7.3 (18.9)	-8.3 (17.1)	-4.9 (23.2)	-0.2 (31.6)	4.8 (40.6)	9.3 (48.7)	12.6 (54.7)	11.6 (52.9)	7.2 (45.0)	3.2 (37.8)	-1.6 (29.1)	-5.6 (21.9)	1.8 (35.2)
Record low °C (°F)	-35.5 (-31.9)	-35.2 (-31.4)	-32.8 (-27.0)	-21.0 (-5.8)	-6.6 (20.1)	-2.2 (28.0)	1.8 (35.2)	0.2 (32.4)	-6.9 (19.6)	-15.0 (5.0)	-22.3 (-8.1)	-33.8 (-28.8)	-35.5 (-31.9)
Average precipitation mm (inches)	61 (2.4)	42 (1.7)	43 (1.7)	32 (1.3)	39 (1.5)	59 (2.3)	79 (3.1)	80 (3.1)	64 (2.5)	78 (3.1)	76 (3.0)	70 (2.8)	723 (28.5)
Average precipitation days	11	8	9	7	7	8	9	11	9	12	13	12	116
Mean monthly sunshine hours	40	75	134	204	284	276	287	230	155	89	38	27	1,839

Source: Climatological statistics for the normal period 1981–2010 [25]



# NOVIA UNIVERSITY OF APPLIED SCIENCES OVERVIEW

<https://www.novia.fi/en/study/exchange-studies>

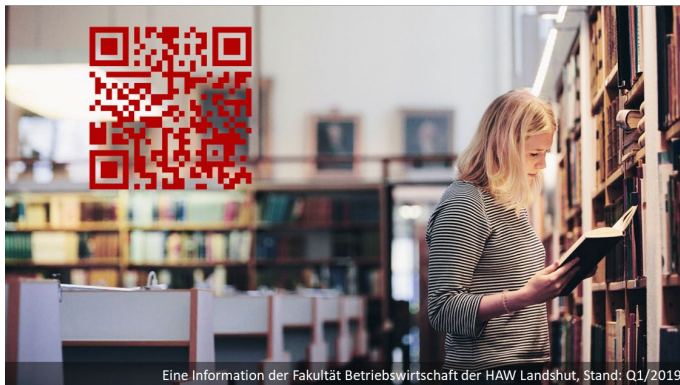


ENTREPRENEURSHIP - FUNKY - ART & NATURE

# NOVIA

UNIVERSITY OF APPLIED SCIENCES

# FINLAND



Eine Information der Fakultät Betriebswirtschaft der HAW Landshut, Stand: Q1/2019

**Turku, Finnland**  
Im Süden Finnlands  
187.000 Ew.

von MUC über Helsinki  
nach Turku  
Ab 140€ in 4-5h

Landshut → Turku  
2.231 km in 27h

Landshut → Turku  
ungeeignet

Von Helsinki nach Turku  
Ab 20 in 2,5h

370€/Monat im Studentenwohnheim  
200€-400€/Monat in einer WG

Big-Mac-Index  
4,52€ (+22% im Vergleich zu Deutschland)

Maritimes Klima:  
Wärmster Monat: Juli mit Ø 21°C  
Kältester Monat: Februar mit Ø -9°C

Tervetuloa.

**Hochschule für angewandte Wissenschaften**  
7 Fakultäten  
gegründet 1996  
Mensa und Restaurant

Unter den Top25 besten Unis  
in Finnland

Schwerpunkte: Finance, Tourism,  
Marketing  
Kleine Kurse mit je 10 bis 50  
Studierenden

Die Bibliothek bietet Lese-  
räume und Räume zur  
Gruppenarbeit an.

Unterricht: Schwedisch und Englisch  
Landessprache: Finnisch, Schwedisch

Turku liegt an der Mündung des Flusses  
Aurajoki in Südfinnland. Vor Turku befinden  
sich zahlreiche Schären und Inseln in der  
Ostsee. Über eine Brücke ist die Insel  
Ruissalo erreichbar. Sie ist mit ihrem  
botanischen Garten das Naher-  
holungsgebiet der Stadt. Sowohl tagsüber  
als auch Nachts ist in Turku viel los.  
In den Semesterferien oder auch am  
Wochenende kann man die Gelegenheit  
nutzen, um die wunderschöne Landschaft  
Finnlands zu erkunden und bei Gelegenheit  
die Nordlichter zu entdecken.

Informationen der Universität:  
[www.novia.fi/novia-uas/](http://www.novia.fi/novia-uas/)

Informationen des IO:  
[www.novia.fi/programmes/student-services/student-mobility](http://www.novia.fi/programmes/student-services/student-mobility)



# NOVIA UNIVERSITY OF APPLIED SCIENCES COURSE OVERVIEW

## AVAILABLE COURSES AT NOVIA

<https://www.novia.fi/en/study/exchange-studies/study-opportunities/degree-programme-in-business-administration-turku>

### AUTUMN (IN TOTAL 31 ECTS)

- Project Management (5 ECTS)
- Marketing Project 1 (3 ECTS)
- Building and Developing Brands (5 ECTS)
- Swedish for foreigners 1 (3 ECTS)
- Communication and PR (5 ECTS)
- Sales Skills and Management (5 ECTS)
- Storytelling for Work, 5 sp
- Event Management, 5 sp

### SPRING (IN TOTAL 30 ECTS)

- Financial management and reporting (5 ECTS)
- Corporate Sustainability and Quality Management (4 ECTS)
- Marketing Project 2 (3 ECTS)
- From international to global marketing (5 ECTS)
- Financing and financial markets (5 ECTS)
- Swedish for foreigners 2 (3 ECTS)
- Service Design (5 ECTS)

Year 2023 might be subject to change.  
Compulsory courses for double degree  
will be defined in March/April 2024



Financial Management

Strategic Management

International Management

Specialization Courses

General Studies

# NOVIA UNIVERSITY OF APPLIED SCIENCES LEARNING CONCEPT

- “DIFFERENT” LEARNING ENVIRONMENT & METHODOLOGY – A LOT OF PROJECT WORK! NEEDS A LOT OF SELF-MOTIVATION & PERSONAL DRIVE → TEAM WORK – TEAM GRADING !
- PERFECT MATCHING IN EDUCATION → LANDSHUT (THEORY) – NOVIA (PRACTICAL WORK)
- SMALL FACULTY IN TURKU → VERY CLOSE AND INFORMAL CONTACT TO ACADEMIC STAFF
- MIXED GROUPS WITH INTERNATIONAL/ERASMUS (GERMAN) AND FINNISH STUDENTS
- ERASMUS+ – NO STUDY FEES (SUPPORT APPROX. 450€/MONTH)
- LIMITATION TOWARDS 4 OUTGOING STUDENTS (PERHAPS 5)
- JUST 2 STUDENTS CAN WRITE BA-THESIS IN TURKU; 2 STUDENTS HAVE TO WRITE IT IN LANDSHUT (ALL DEPENDS ON NEGOTIATIONS!)
- JUST 12 ECTS CAN BE ACCEPTED FOR THE THESIS BY HAW LANDSHUT (15 ARE GIVEN AT NOVIA)





Was kostet die Welt?

## Turku, fischig und freakig

Ich verstehe nur ää, öö, ii - zugegeben: Finnisch ist nicht einfach, aber in Turku funktioniert auch Englisch. Fast jeder vierte Einwohner ist Student, und entsprechend viel wird gefeiert. Besonders bei Sitzpartys, denn die sind besonders günstig.

*Von Julia Bömer*



THANK YOU VERY MUCH FOR YOUR ATTENTION.

QUESTIONS?



# HOCHSCHULE LANDSHUT

Am Lurzenhof 1  
84036 Landshut

Phone: +49 (0) 871 - 506 0  
[info@haw-landshut.de](mailto:info@haw-landshut.de)  
[www.uas-landshut.de](http://www.uas-landshut.de)